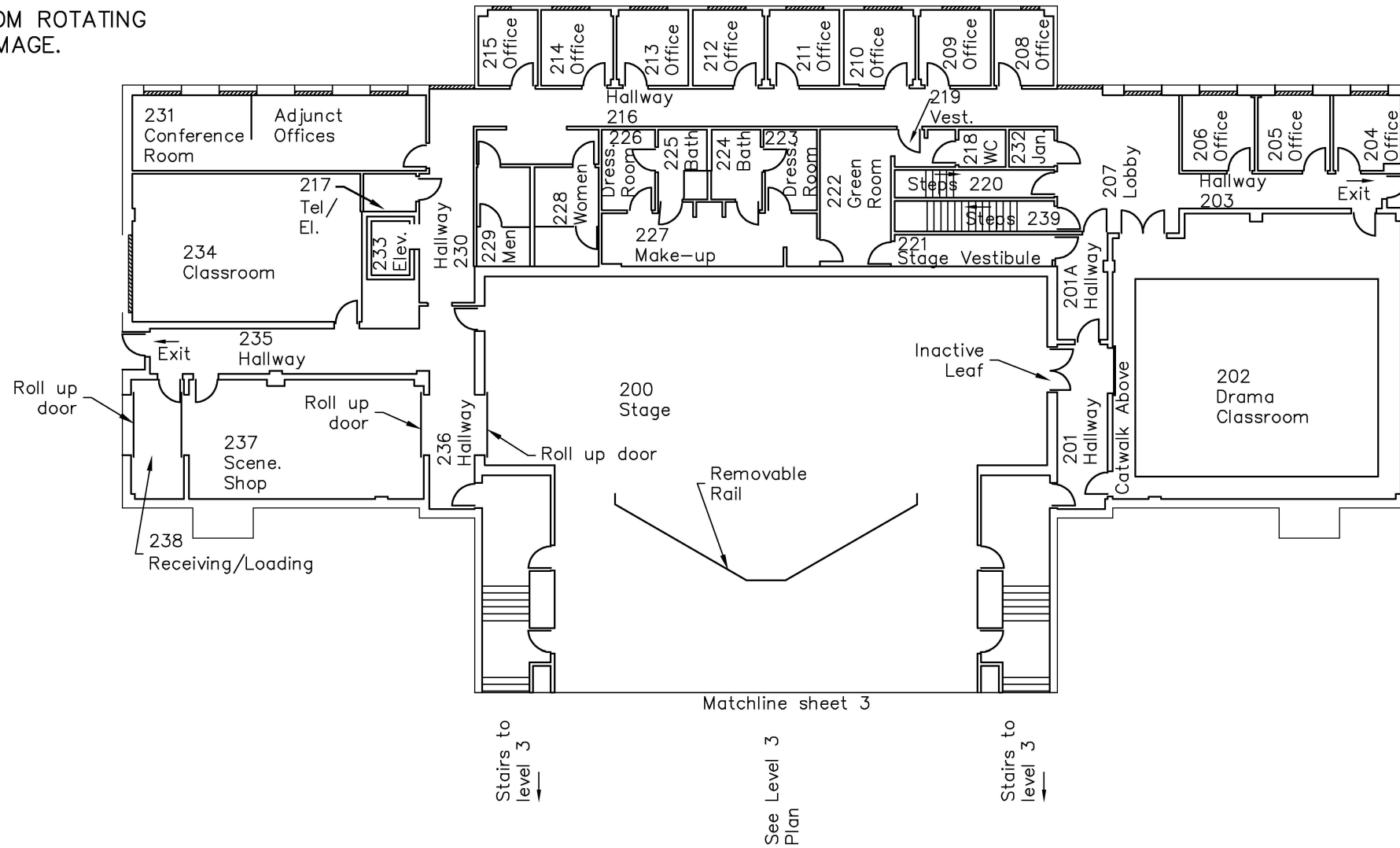
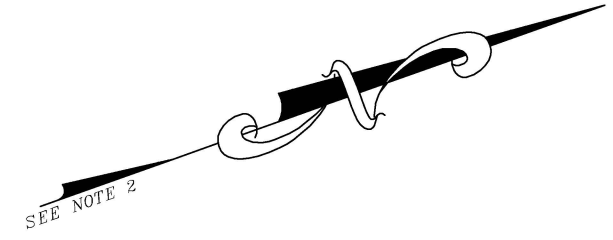
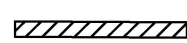


NOTES:

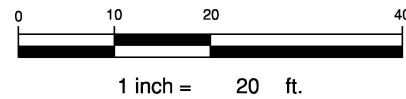
1. THE INFORMATION SHOWN HEREON WAS PRODUCED SOLELY FROM THE RECORD DRAWING PLAN SHEET A2 OF 27, TITLED "LEVEL 2 PLAN" BY DEWBERRY AND DAVIS, DATED SEPTEMBER 1998 AND SUPPLIED TO DRAPER ADEN ASSOCIATES BY PIEDMONT VIRGINIA COMMUNITY COLLEGE. DRAPER ADEN AND ASSOCIATES ASSUMES NO LIABILITY FOR ANY INACCURACIES ON SAID PLANS.
2. NAD83 APPROXIMATE; DERIVED FROM ROTATING PDF PLANS INTO AERIAL SURVEY IMAGE.



LEGEND:



WINDOW



CLASSROOM EXHIBIT 2ND LEVEL DICKINSON BUILDING
 PIEDMONT VA COMMUNITY COLLEGE, CHARLOTTESVILLE, VA

Draper Aden Associates
 Engineering • Surveying • Environmental Services
 700 Harris Street, Suite E
 Charlottesville, VA 22903
 434-295-0700 Fax: 434-295-2105

Blacksburg, VA
 Richmond, VA
 Hampton Roads, VA